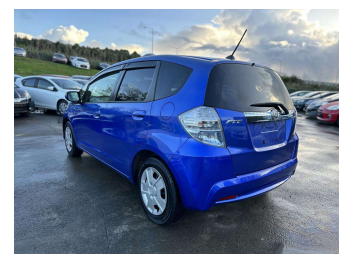


2012 Honda Fit Hybrid Low KMS



Purchase Price **\$9,988**

Includes GST
Excludes on-road costs of \$595

Indicative repayments


\$41.80 per week*

Based on a 60 month term & 25% deposit.
Total repayments (260) = **\$13,513.06**

Gain peace of mind with
Mechanical Breakdown Insurance. Ask us how.


Top features

- » 3 Rear Shoulder Belts
- » ABS Braking w/ EBD
- » Air Bag(s)
- » Air Conditioning
- » Black Interior
- » CD Player
- » Central Locking
- » Central Locking
- » Chain Driven
- » Child seat anchor poin...
- » Clean Car Rebate
- » Climate Control
- » Cruise Control
- » Dark Interior
- » Digital Dash
- » Digital Display
- » Electric Mirrors
- » Electric Mirrors (Retr...

Body Style	5 door, Hatchback	Reg No.	-
Odometer	69,000 km	Ext Colour	Blue
Engine	1300 cc, Hybrid	History	-
Fuel Type	Hybrid	Seats	5 seats, Deluxe Cloth
Transmission	Automatic, Front Wheel	CO2 Emissions	★★★★☆
Wheels	Hubcap	113 grams/km	
VIN	7AT08G2YX24211465	Energy Economy	★★★★☆☆
Interior	Black, Duluxe Cloth	Annual fuel cost of \$1,840	
Safety		4.7L per 100km	
	<small>Based on 2023 UCSR rating for 08-14 models</small>	Cost per year is an estimate based on petrol price of \$2.80 per litre and an average distance of 14000 km. Emissions and Energy Economy figures standardised to 3P WLTP.	
		Stock ID: 6838	



R K Cars | Phone 0508 75 22 77 | Email sales@rkcars.co.nz
160 Stoddard Road, Behind Gull, Wesley, Auckland 1041, New Zealand
www.rkcars.co.nz

 **4.44** | 957 reviews

* R K Cars is not a lender nor a financial adviser. Any amounts displayed should not be seen as an offer of finance or taken as financial advice. The interest rate, fees and loan term used in this calculation may not actually represent those available from lenders. Actual interest rates, fees and loan terms will vary per lender and are typically based on an assessment of your credit risk and responsible lending criteria. Any repayment amounts displayed are indicative only and have been calculated using several other indicative inputs. The interest rate used in this calculation is an arbitrary 10.99%, however exact interest rates vary per lender. The term of the loan used in this calculation is 60 month. Exact terms available vary per lender although options typically include 6, 12, 18, 24, 36, 48 and 60 months. This calculation also includes a typical mandatory fee charged by lenders. This is a one-off establishment fee of \$395.00. Typically, this fee can be paid upfront or, as in this calculation, be capitalised over the contract term, ie. included in the loan amount. This fee can vary per lender and other non-mandatory fees and charges may also apply. The total amount of repayments has been calculated by multiplying 260 weekly repayments (based on a 60 month term) by the weekly repayment amount of \$41.80 which equals \$13,513.06. This calculator does not consider any of your own personal circumstances and we strongly suggest you seek budgeting advice prior to committing to any loan contract. Responsible lending criteria and lender terms and conditions will likely apply to any finalised loan contract. Proof of security and/or vehicle insurance may also be required before proceeding.